



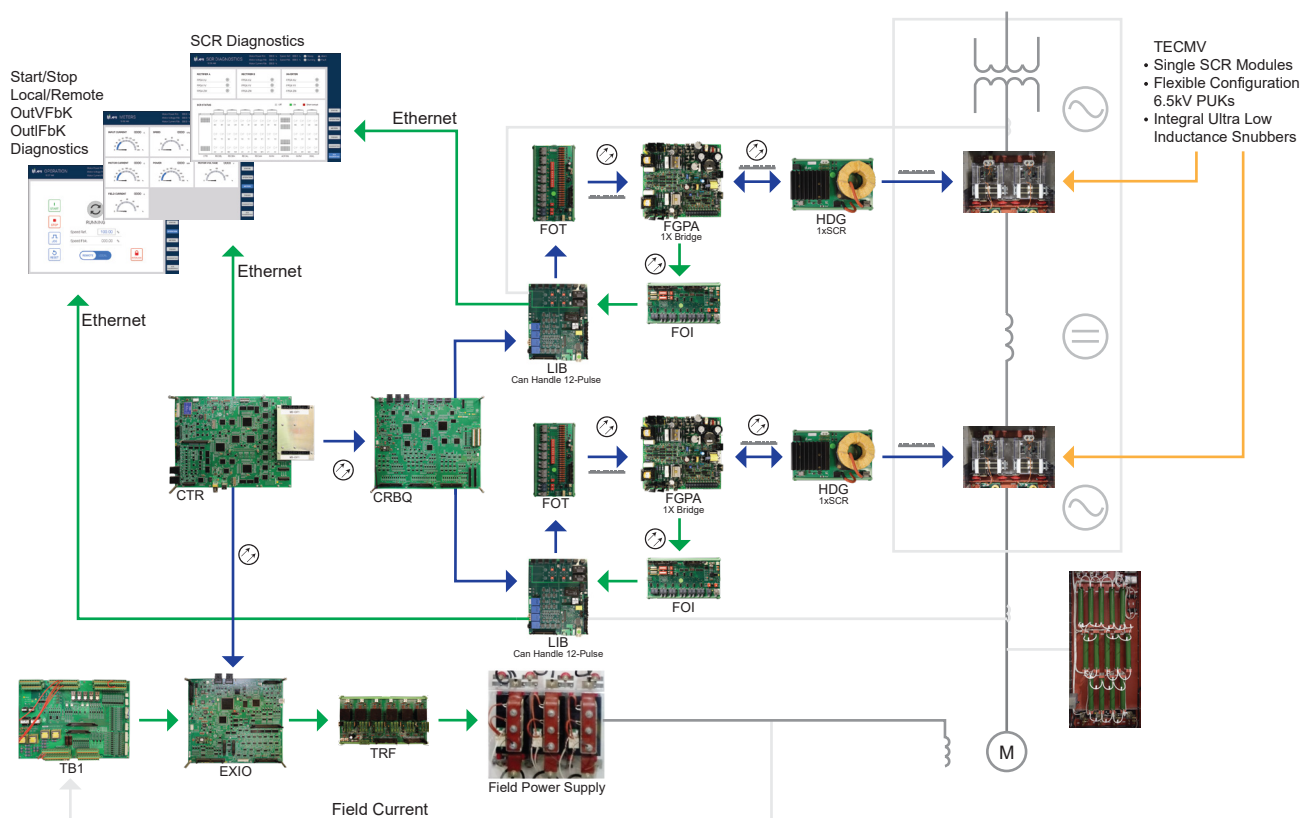
# DigiDrive™ LCI

## Load Commutated Inverter

### DigiDrive™ LCI

AMI Automation is a world class company with drive design, engineering, and manufacturing experience that allows covering a multiplicity of ranges, capacities and configurations as the applications required.

DigiDrive™ LCI (Load Commutated Inverter) is a microprocessor based integrated drive and process control subsystem. Incorporating TMEIC™e2 advanced control technology, it has been designed to be the controller for large size Synchronous Motors where the need for advanced control requirements, high speed of response, expanded diagnostic capability and various I/O interfaces are beyond the capability of conventional analog control.





## Features:

- ▶ Modular input bridge design
  - 6 or 12 pulse
  - Ranges 4.16kV, 6.9kV
- ▶ Modular output bridge design
  - 6 or 12 pulse
  - Ranges 4.16kV, 6.9kV
- ▶ High efficiency
- ▶ Air Cooled
- ▶ Integral Field Power Supply based in DigiFEX™ Technology
- ▶ Friendly Local Interface
- ▶ Communication capabilities (Ethernet IP®, Modbus TCP®, ProfiNET®, Profibus®, and many other protocols)
- ▶ Seamless PLC integration with a variety of brands, using communication or I/O
- ▶ Design and build to new systems as well as firing control retrofit for existing installations
- ▶ TMDrive® Navigator for setup, diagnostics and troubleshooting
- ▶ CSA certification
- ▶ ISO-9001-2015 manufacturing
- ▶ The following rates are available
  - 10 MVA /15 MVA @ 4160V
  - 16.6 MVA / 24.9 MVA @ 6900V

## Modular and Maintainable:

- ▶ Single SCR modules
- ▶ Flexible configuration with 6.5kV PUK SCR
- ▶ Integral ultra low inductance filters
- ▶ MTTR - 15 minutes
- ▶ Simple field repairable - no special tools required
- ▶ Shorted SCR detection
- ▶ N+1 SCR redundancy

## Air Cooled:

- ▶ High efficiency cooling unit
- ▶ Heat sink
- ▶ Long life DC fans
- ▶ Lower cost and maintenance



Mining



Oil & Gas



Pulp & Paper



Steel



Cement